



## **Encapsulation Cleaning & Water Stain Removal System**

### **Encapsulation Cleaning....What is it ?**

Encapsulation is a relatively new carpet cleaning process which utilises advanced technology and manufactured by Prochem the leaders in carpet cleaning products in the UK. Their chemical Procaps contains three different encapsulation surfactants each with an attraction to certain types of soiling and an embrittling agent which encourages the soiled residue to quickly crystalize and be easily removed by vacuum cleaning. The encapsulation process where controlled wetting is employed is better suited to an indoor bowling green rather than the wet extraction system previously used which tended to turn the trapped dust and dirt into mud or slurry as it drawn through the carpet fibres. This often left dirt lines on the carpet where the side edges of the vacuum shoe on the extraction machine were touching the carpet.

The good thing about this new carpet cleaning system is that the carpet almost dries in front of your eyes leaving a fresher cleaner looking green which is ready to play on usually within a couple of hours of finishing the cleaning process. This encapsulation system will not remove water stains which are the first things to be tackled.

### **Why the encapsulation system for bowling greens ?**

The encapsulation system has several advantages over conventional wet cleaning systems.

- Green looks better and is much cleaner than using an extraction process that tends to draw the dirt trapped underneath the carpet to the upper level.
- Life expectancy of the carpet is enhanced as the encapsulation product contains anti soiling properties which prevents the further build up of dirt if regular vacuum cleaning is introduced.

- Downtime of the green is reduced so that the loss of revenue from rink fees is reduced. From start to finish a two man team can clean a six rink green comfortably in 4 hours and the green is ready to bowl on again in a further hour.

## Water Stains

The most common stain on the carpet experienced by bowls clubs is from water which can come from a variety of sources, leaking roofs, condensation off heating ducts, burst pipes etc. etc. Before we go through the removal process it is important to know just what a water stain actually is. The term 'water stain' is a bit of a misnomer as it is not the water that stains the carpet, it is the drying process and the dirt trapped within the carpet that causes the stain. A bowls carpet is very open weave and unless vacuumed thoroughly using an industrial cleaner the dirt becomes trapped and because the carpet is made of polypropylene it tends to be held there by static retention.

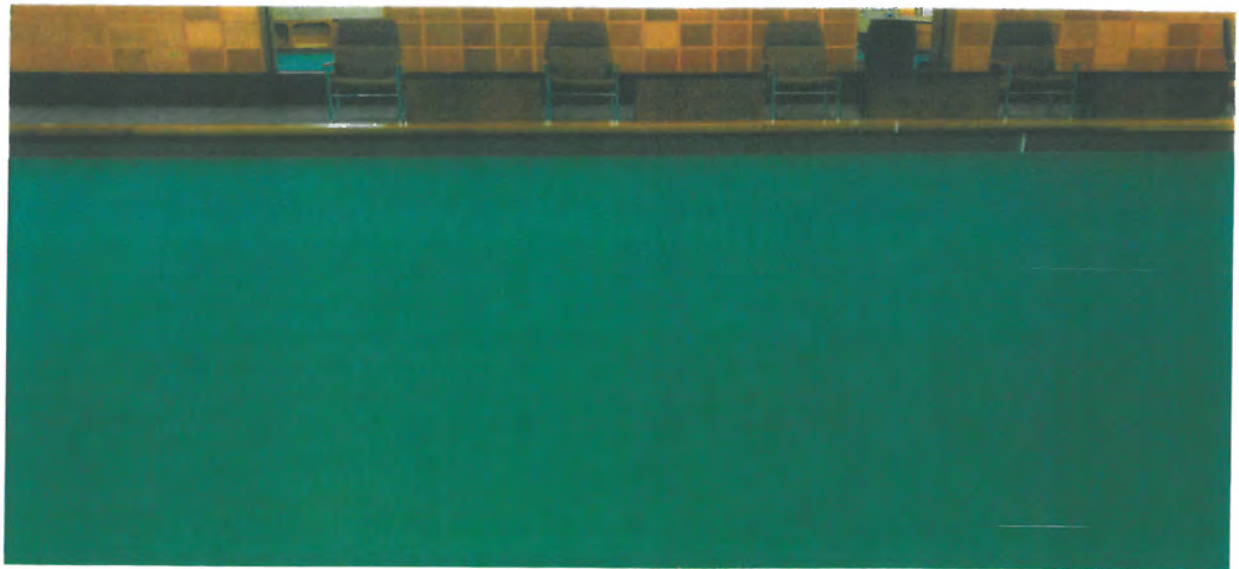
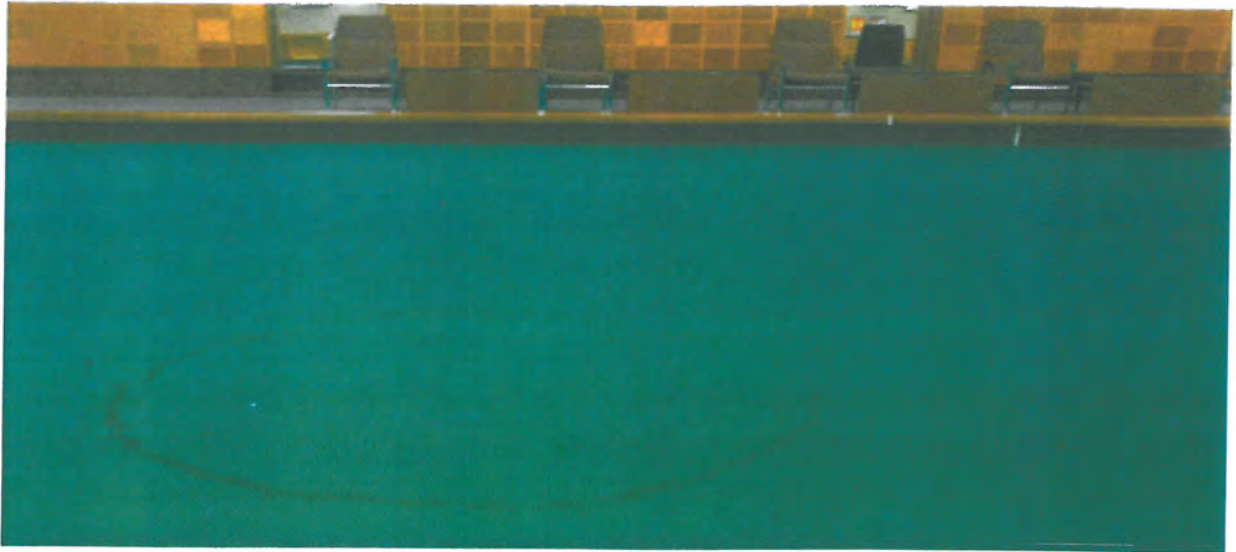
When you have a water leak the water drops through the carpet and as the underlay and carpet are not absorbent the only way for the water to travel is to migrate outwards. In a bowls carpet this process is exacerbated further by the carpet itself which in the manufacturing process is woven from very long thin strands thus assisting the outward or lateral migration of the water. As the water travels it takes with it the dirt trapped in the carpet and as the carpet eventually dries out, it leaves a tide ring or mark. This is why depending on the severity of the leak we often see these stains several feet away from the actual spillage area and are particularly unsightly with a dark ring on the outer edge. Water stains therefore give an indication of how dirty the carpet is, the darker the stain reflects the level of dirt that you have trapped in the carpet itself which obviously needs to be addressed.

This is why we need to vacuum the area thoroughly to remove as much surface and trapped dirt as possible before stain cleaning otherwise when we apply more water to remove the stain we may create yet another water mark.

By using specialised products we are able to remove the majority of the stain but the degree of success depends on how bad the stain is and the length of time it has been in the carpet.

The following pictures indicate the effectiveness of this process which were taken at Stanley IBC in August 2012. The water stain in the picture had been in the carpet for approximately seven years, was about 8 feet in diameter and quite an eyesore.

**Before:-** *One of the water stains at Stanley IBC before cleaning*



**After:-** *The same water stain at Stanley IBC after cleaning to initially remove the stain, followed by a general clean of the entire green with the new encapsulation dirt removal system.*

**Photographs:-** Courtesy of Mr. Brian Slinn Seniors Secretary and Website Manager for Durham IBA

The impression created with Brian Harris President of Stanley IBC was one of almost disbelief and he commented as follows:-

***'The carpet at Stanley IBC has been down 15 years and had some really bad water marks as a result of various leaks from the roof over the years. We thought we had to live with them forever but how wrong we were !***

***All this came about following a demonstration of a Proweave Sportsvac which has been supplied to quite a number of indoor bowls clubs. This vacuum, which was demonstrated by Simon Davies was easy to use and picked up an incredible amount of dust from the carpet and we ordered one straight away.***

***It was through Simon we learned these water stains that made our green look tired and shabby could be significantly improved upon. We agreed to give it a go although bearing in mind some of these stains had been down for at least 7 years and we were not holding our breath.***

***A week later when we could manage to close the green for a day, Simon returned and working alongside Peter Hiom of Dales Sports using specialised equipment cleaned all eight rinks in about 5 hours.***

***Much to our amazement the stains are barely visible and the green looks fresh and clean again. We were thrilled and would certainly recommend this to any other club.'***

This is the level of reaction you need to try to achieve as the bowls fraternity is a fairly close knit community and no doubt Brian will pass his comments on to other clubs in the North East. Stanley IBC have just been awarded the Home International series for the next three years and so his personal recommendations could suddenly migrate to all parts of the UK as a result of one job well done.

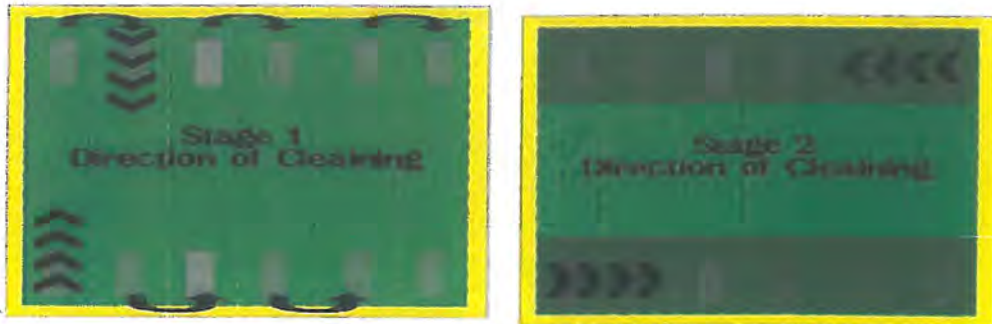
Conversely a bad impression created by you for whatever reason can also be passed on to other clubs just as easily and leave the door open for your competitors.

### The Complete Cleaning System

Working as a two man team, one person ( team member 1 ) needs to walk the green to map any water stains or other marks that need attention as these will need to be treated before the encapsulation process can start. This is a simple process using a grid system of panels and rinks and will result in no stains being missed.



see a bruising like effect where the bowls on delivery, impact on the ingrained dust and dirt.



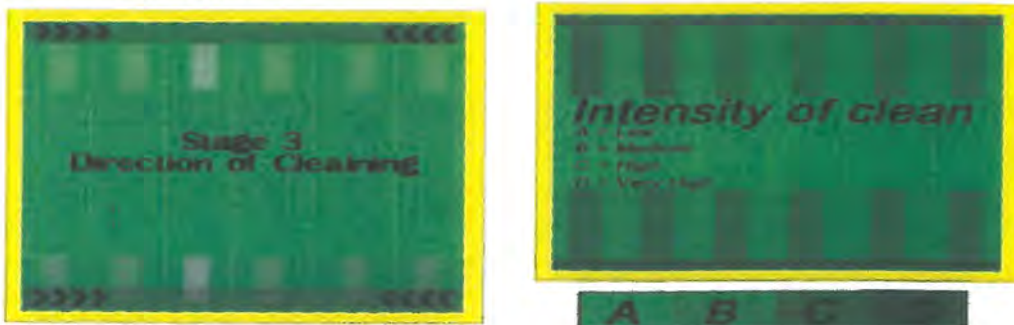
### Stage 2

Having cleaned the entire green we now need to concentrate on the top and bottom two panels which is where most of the activity takes place during a bowls match. Start by vacuuming across the green commencing at the end of the second panel and working your way toward the end ditch. Each time you cross over the central area of each rink walk a little slower so that you again concentrate your effort on the area of the green that needs most cleaning.

### Stage 3

Finally as you approach the T or two metre marker we need to intensify our cleaning further as this is the area of the green which is where players step onto the green and bring with them any ingressed dust and dirt from the surrounds of the green.

This section of carpet represents about three passes with the Proweave Sportsvac, we suggest therefore that you again walk slowly over this area and at the end of each run pull the vacuum backwards over the entire width of the green. This will have the effect of doing a deeper clean on the carpet because you are working against the direction of the brush roll. This will also remove any dust or swirl marks which were created on turning when you cleaned the green going up and down.



The above process once you have become familiar with the vacuum cleaner takes on average about 10 minutes per rink so that a six rink green takes approximately one hour with the darker shaded areas representing the intensity and time spent during the cleaning process.

Once team member 1 has mapped the green for water stains and they have been vacuumed thoroughly to remove as much surface and trapped dirt as possible we can start the stain removal process.

### Method to Remove Water Stains

Using a small pump up pressure bottle with the prescribed chemical 'Ultrapac Renovate' fill the bottle diluted to a ratio of 1 part chemical to 50 parts water

Spray the affected area and lightly scrub in using a hand held brush and allow a contact time of two to three minutes.

Using the Nevada 640 with all motors running lift as much moisture out of the carpet with the upholstery tool. If a stain proves hard to shift then apply further spray but sucking out almost immediately. The extraction tool is opaque in colour so you will be able to see if dark staining is being pulled out of the carpet. It is important to extract out of the carpet as much moisture as possible otherwise we may possibly leave behind another water mark as it dries out.

Depending on the size of the water stain you may have to do this process section by section.

It is important to note that the water stain treatment must be completed before the encapsulation process can start

### Method of Encapsulation Cleaning

Using a large pump up pressure sprayer with the prescribed chemical 'Procaps' fill the sprayer diluted to a ratio of 1 part chemical to 16 parts water. One of the team needs to be pre-spraying and the other following on a couple of minutes later with the contra rotating brush machine. With this machine also spraying out 'Procaps' solution, the brushes massage the product deep into the carpet fibres and the whole process is further enhanced by the fact that the encapsulation product because it is diluted with water results in the static retentive property of the carpet in clinging on to the dirt being diminished.

As the carpet is only slightly moistened it dries very quickly and by the time the end panels have been cleaned the bottom panels are dry enough to vacuum again taking with it the crystallised residues and dirt out of the carpet.

### Method in Brief

- Map the green for stains
- Vacuum the carpet
- Remove the water stains
- Spray the carpet
- Brush and spray the carpet.
- Vacuum the carpet when dry enough to do so.

### Speaking to Club Officials

When asked by club officials about what you are doing it is important to talk enthusiastically about it, the process and the reasons why it is beneficial for their club.

It is always worth bearing in mind that you are representing the company, that they know probably next to nothing about green cleaning and you are perceived to be the expert.